



TO MAT OR NOT TO MAT*
Matting and Access Solutions

1-877-MUD-UGLY
paradoxaccess.com

ABOUT.

Paradox Access Solutions is the industry leader in innovative access solutions.

Since 2004, Paradox has been providing industrial access mats, swamp mats, rig mats and ground reinforcement for the pipeline, utility, municipal, general construction, and the oil and gas industries in western Canada. With over 50 years of management experience in these industries, we have the expertise to handle your project, while helping you mitigate environmental impact.

Our work is always guided by:

- Outstanding customer service
- Superior knowledge and innovative products and engineering
- Commitment to safety and the environment

We are committed to serving you and meeting your needs. Contact us today.

1-877-MUD-UGLY
paradoxaccess.com





OAK MATS.

Each premium 3 ply mat is secured with 172 carriage bolts, and has a solid core to minimise wane. Oak also absorbs less water and mud resulting in less weight and lower removal costs.

Specifications	
Size	8' x 14' x 5 5/8"
Weight	2,800 lbs
Super B Load	32 mats/load

FIR & HYBRID MATS.

Not all projects require the same solution, so we carry a variety of high quality wooden mat solutions. For example, hybrid mats are a fir mat with an oak outer lining to add durability.

Specifications (Fir)	
Size	8' x 14' x 5 1/8"
Weight	1,800 lbs
Super B Load	50 mats/load

Matting with wood products:

- a) Oak (imported from USA)
 - Strongest wood for matting
 - Long lifespan (4-7 years, depending on service application)
 - Proven life of 6.5 years
 - Easy maintenance
- b) Softwoods (local- virtually phased out)
 - Local labour may be used to construct mats
 - Short lifespan (1.5- 2.5 years)
 - Easy maintenance





CRANE MATS.

Also known as digging mats, bridge mats, timber mats and construction mats. This mat is available in hardwoods, pine, douglas fir and hemlock.

	Specifications
Sizes*	1' x 4' x 20' 1' x 4' x 30' 1' x 5' x 30'
Types	Hardwoods Hemlock
Super B Load	32 mats/load

*Custom sizes also available



STEEL FRAME RIG MATS.

Providing access over unstable ground and pipelines, these mats are ideal for heavy equipment and drilling rigs.

	Specifications
Size	8' x 20' 8' x 40'
Weight	4,500 lbs or 9,000 lbs
Transport	20 on Super B (20' only) or 7 on Tridem (40')



PIPELINE CROSSING.

Our pipeline crossings can be hauled and put into position in one lift. Traditionally, pipeline crossings used steel and wood mats with a clay top, which proved costly, making this a better alternative.

	Specifications
Size	8' x 16' per/section with an 8' span
Weight	11,000 lbs
Capacity	120,000 lbs



RUBBER MATS.

Rubber mats are a viable and economical solution for long-term use in the sloppiest site conditions. The surface is textured and designed to provide excellent traction for all types of traffic. The material in each standard mat section is made of 300- 400 recycled tires and uses a built-in torsion system. Rubber mats follow the natural contours of rolling land and absorb impact, minimizing damage and breakage.

Specifications	
Size	8' x 14'
Weight	2,300 lbs
Super B Load	32 mats/load

RUBBER SIDEWALKS.

This is the ideal solution for camps, facilities, drill sites and temporary office sites. The material in each standard sidewalk section is made of 150 recycled tires and a built-in torsion system. We offer the option to customize with your logo, phone number and/or website.

Specifications	
Size	4' x 14'
Weight	1,200 lbs
Super B Load	70 mats/load



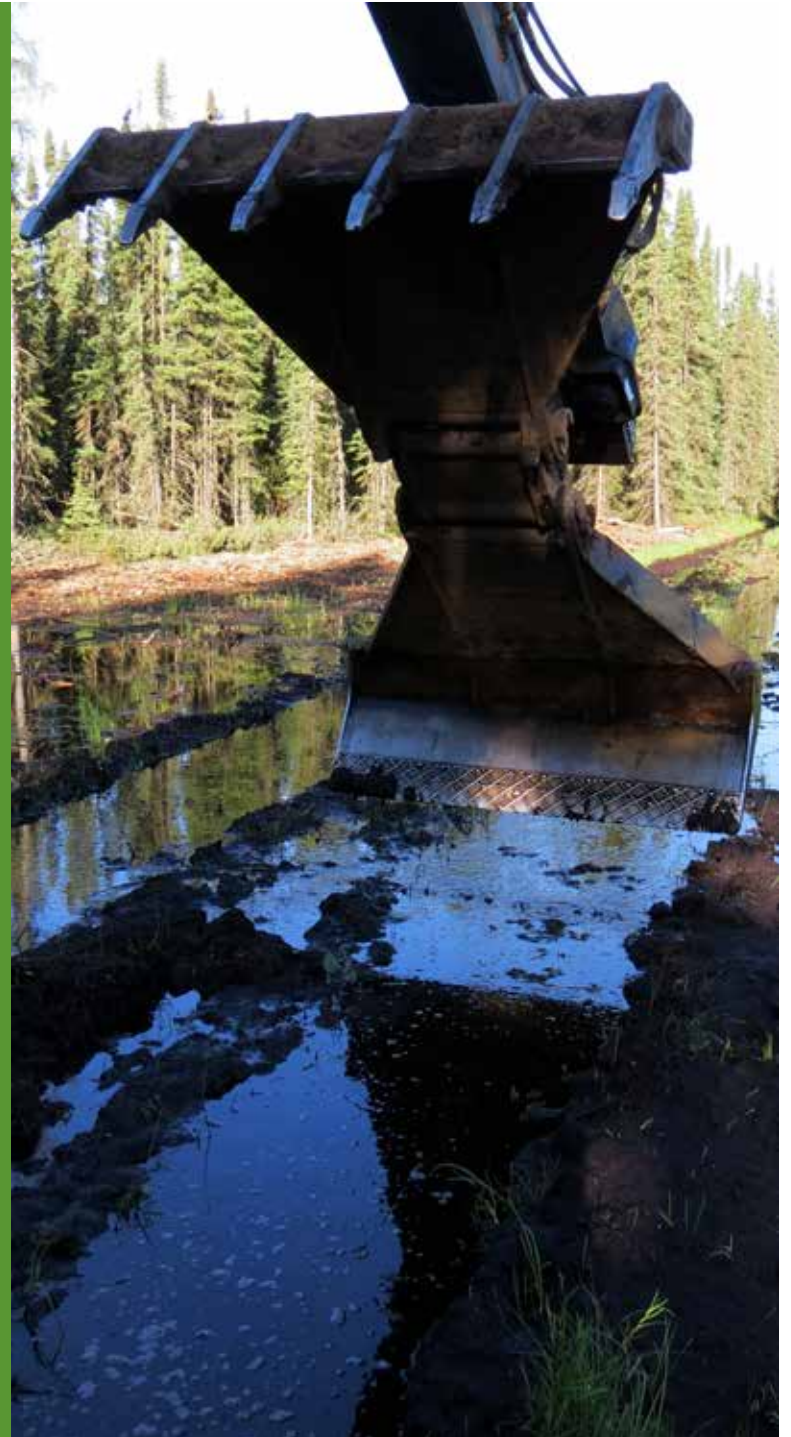
Matting solutions can be applied in a variety of industries including:

- Oil and gas
- Power transmission and distribution
- Heavy haul
- Aviation
- Environmental remediation
- Alternative energy
- Construction
- Mining
- Military
- Trenching and shoring
- Disaster relief
- Public works
- Special events
- Pipeline construction
- Emergency access



Paradox offers a variety of services to assist in streamlining your experience with us. From sales and rentals to installation and removal, the following comprises our turn-key services:

- Earthworks, including site analysis and ground preparation
- Storage, transport, and delivery
- Maintenance and repair
- Project management
- Mobilization & demobilization
- Loss prevention system
- A fleet of heavy duty equipment
- Operations and logistics
- All of the above is complemented by our qualified, trained staff





INNOVATIVE ACCESS.

PRS-Neoweb is our access solution star. PRS-Neoweb is the superior, durable reinforcement solution meeting the diverse needs of the geotechnical, civil engineering, and construction community. Formed in a honeycomb structure, PRS-Neoweb becomes a composite material when filled with soil.

Typical applications include:

- Load support for paved & unpaved roads, railways, remote access roads, and pads
- Slope and channel erosion protection
- Earth stabilization and retention
- Landfills and reservoirs

BENEFITS

- Made of Neoloy™, the highest performance geosynthetic
- Reduces aggregate quantity by 50% or more
- Withstands temperatures of +60°C to -60°C
- Uses inexpensive local infill and aggregates
- Easy and fast installation
- Reduces maintenance and operating costs over its lifetime
- Long-term design strength of geogrid / geocell
- Saves time, money, and resources
- Offers optimal economics for periods of use from 6 months to 20 years
- Life expectancy of 20 years, depending on usage and application

WHO IS PARADOX?

Paradox Access Solutions Inc. was founded in 2004. The company's objectives is to change the conventional culture of the access industry by providing economical and technologically innovative solutions that mitigate environmental impact.

Marc Breault's experience working as a site access consultant in the oil and gas sector gave him a perspective on the failings of the traditional service and product offerings. Marc founded Paradox Access Solutions to provide innovative, more effective alternatives. The company continues to explore through on-going research and development new and better methods for providing its clients with cost-effective access solutions that minimise environmental impact.



BENEFITS OF USING US.

- Paradox is a full-service supplier of all matting and access solutions tailored to meet your specific needs
- We provide turn-key service, 24 hours per day, 7 days per week so you are never alone, never without assistance
- Our fleet of vehicles and equipment are maintained on a regular schedule, meeting or exceeding manufacturers' recommendations
- Paradox Access Solutions' staff are trained to the highest standards, and we are qualified members of:
 - COR
 - BBB
 - CQN
 - PICS
 - ISN
 - ACSA
 - ComplyWorks
- We partner with our suppliers and colleagues to ensure we continue to lead the industry in new products and services
- Paradox Access Solutions has an extensive network of depots, which means less expensive and faster delivery of solutions
- We offer a range of alternative pricing packages customized to your project and budget so you get exactly what you need





LOCATIONS.

■ Griffith, Saskatchewan

Fort McMurray ■

■ Grande Prairie

■ Westlock

■ St. Albert

■ Winfield

■ Coronation

■ Drumheller

Medicine
Hat ■



#100, 340 Circle Drive
St. Albert, Alberta
T8N 7L5

Tel: 780-418-1955

www.paradoxaccess.com
info@paradoxaccess.com

Alberta | British Columbia | Saskatchewan



**The title "To Mat or Not to Mat" originates from International Mat of Canada's highly regarded "The Total Source for Matting Systems"*

1-877-MUD-UGLY